

**Anti-CDC6 Antibody**  
**Rabbit polyclonal antibody to CDC6**  
**Catalog # AP60739****Specification**

---

**Anti-CDC6 Antibody - Product Information**

Application	WB, IHC
Primary Accession	<a href="#">Q99741</a>
Reactivity	Human
Host	Rabbit
Clonality	Polyclonal
Calculated MW	62720

**Anti-CDC6 Antibody - Additional Information****Gene ID** 990**Other Names**

CDC18L; Cell division control protein 6 homolog; CDC6-related protein; Cdc18-related protein; HsCdc18; p62(cdc6); HsCDC6

**Target/Specificity**

Recognizes endogenous levels of CDC6 protein.

**Dilution**

WB~~WB (1/500 - 1/1000), IH (1/100 - 1/200)

IHC~~1:100~500

**Format**

Liquid in 0.42% Potassium phosphate, 0.87% Sodium chloride, pH 7.3, 30% glycerol, and 0.09% (W/V) sodium azide.

**Storage**

Store at -20 °C. Stable for 12 months from date of receipt

**Anti-CDC6 Antibody - Protein Information****Name** CDC6**Synonyms** CDC18L**Function**

Involved in the initiation of DNA replication. Also participates in checkpoint controls that ensure DNA replication is completed before mitosis is initiated.

**Cellular Location**

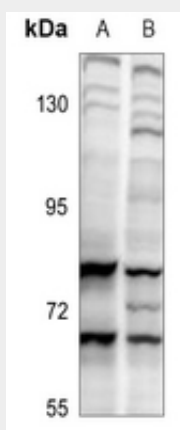
Nucleus. Cytoplasm Note=The protein is nuclear in G1 and cytoplasmic in S-phase cells (PubMed:9566895).

## Anti-CDC6 Antibody - Protocols

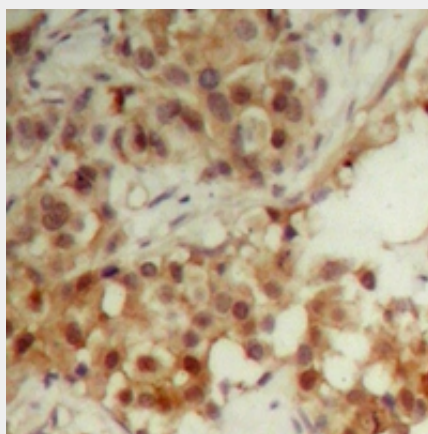
Provided below are standard protocols that you may find useful for product applications.

- [Western Blot](#)
- [Blocking Peptides](#)
- [Dot Blot](#)
- [Immunohistochemistry](#)
- [Immunofluorescence](#)
- [Immunoprecipitation](#)
- [Flow Cytometry](#)
- [Cell Culture](#)

## Anti-CDC6 Antibody - Images



Western blot analysis of CDC6 expression in HEK293T (A), A549 (B) whole cell lysates.



Immunohistochemical analysis of CDC6 staining in human breast cancer formalin fixed paraffin embedded tissue section. The section was pre-treated using heat mediated antigen retrieval with sodium citrate buffer (pH 6.0). The section was then incubated with the antibody at room temperature and detected using an HRP conjugated compact polymer system. DAB was used as the chromogen. The section was then counterstained with haematoxylin and mounted with DPX.

## Anti-CDC6 Antibody - Background

KLH-conjugated synthetic peptide encompassing a sequence within the C-term region of human CDC6. The exact sequence is proprietary.